

2MP Network Stainless Steel Vandal Dome Camera

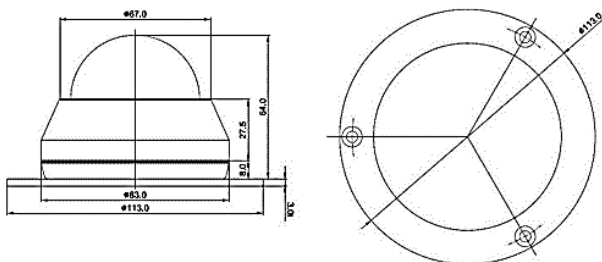


FEATURES

- 1/2.8" Sony 2 Megapixel STARVIS Image Sensor
- 16 : 9 Full HD(1080p) & Realize a vivid natural image
- Built-in Filter Change Day & Night Mechanism
- 3.6mm Megapixel Fixed Lens
- H.265 / H.264 / MJPEG Multi Codec & Triple Streaming
- Saving capacity and bandwidth through H.265
- ONVIF Profile & SDK support provides convenient heterogeneous interworking
- Durable AISI 316L stainless steel
- Compact size
- 3-axis gimbals Bracket structure can be adjusted freely
- Easy and convenient installation
- IP68
- DC 12V, Cable Type PoE(IEEE802.3af)support

DIMENSION

(unit : mm)



SPECIFICATION

MODEL	MV07Bi2A
VIDEO	
Sensor	1/2.8" Sony 2Mega STARVIS image sensor
Effective Pixels	1945(H) x 1097(V), 2.13 Mega Pixels
Resolution	1080p@30fps/1080p@25fps
Scanning System	Progressive Scan
Min. Illumination	Color : 0.03Lux, B/W : 0.0Lux(IR LED ON)
S/N Ratio	More than 50dB (AGC OFF)
Video Output	Full HD 1080p@30_25fps Analog CVBS (NTSC/PAL Selectable)
LENS	
Focal Length	3.6mm MP Fixed Lens
Iris Control / Focus Control	Manual / Manual
FUNCTION	
Day & Night	AUTO / COLOR / BW / EXT
AGC	OFF / ON
WDR	OFF / BLC / HLC / D-WDR / WDR(120dB)
DNR	OFF / ON, 2D-NR & 3D-NR (Level Adjustment)
White Balance	ATW / AWC / INDDOR / OUTDOOR / Manual / AWB
Electric Shutter	AUTO/MANUAL(1/50(60) ~ 1/50,000 sec)
Motion Detector	OFF / ON (Adjustable size and position)
Privacy Mask	OFF / ON (Adjustable size and position)
Sens-up	OFF / ON (Level Adjustment)
OSD Language	Multi language Support
IR LED / IR Distance	N/A
Others Function	Mirror, Flip, Defog, LDS, Sharpness, Etc.
NETWORK	
OS	Embedded Linux
Ethernet	RJ-45 (10/100 Base-T PoE)
Video Codec	H.265, H.264, MJPEG
Video Streaming	Triple Stream (Stream 1,2,3) RTP/RTSP, UnicastRTP, Multicast RTP
Resolution	1920x1080, 1280x1024, 1280x960, 1280x720, 1024x768, 640x480, 320x240
Frame Rate	Max 30fps@ 1920x1080
Video Quality	H.265 / H.264 : Bitrate Control, MJPEG : Quality Level Control
Protocol	TCP/IP,UDP/IP,RTP,RTSP,RTCP,NTP,HTTP,DHCP,FTP,SMTP, DNS,DDNS
Security	User account and password protection, IP filtering, HTTPS
ONVIF	ONVIF Profile S
Memory Slot	N/A
Max. user access	Max. 10 users
SDK Support	API, ONVIF Profile S Compliant
Client Software	Web Browser, ONVIF Compatible 3rd Party VMS
Web browser OS	Windows 7, 8, 10
GENERAL	
Operating Temp.	0°C ~ +50°C
Operating Hum.	90% RH
Power	DC 12V±10%, Cable Type PoE : IEEE 802.3af compliant
Protection grade	Waterproof / IP68 compliant
Material	Stainless steel body & 3-axis bracket (AISI 316L)
Dimension (mm)	φ67 X 83(W) X 64(H)
Weight	Approx. 920g

* Specification and design are subject to change without notice.