

3MP Network IR LED Indoor Dome Camera



MIPD-I3IF



MIPD-I3IV

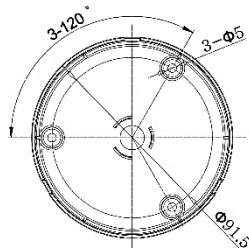
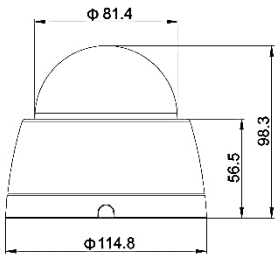


FEATURES

- 1/2.8" SONY STARVIS 3Megapixel Image Sensor
- Max. 2065(H) x 1536(V)@30fps
- Ultra High Definition & Realize a vivid natural image
- H.264 / MJPEG Multi Codec & Triple Streaming
- Built-in Filter Change Day & Night Mechanism
- 4pcs Highlight power sensitivity IR LED
- ONVIF Profile & SDK support provides convenient heterogeneous interworking
- Local SDHC memory slot support
- 3-axis gimbals Bracket structure can be adjusted freely
- DC 12V, PoE(IEEE802.3af) support
- Select Lens Specification

DIMENSION

(unit : mm)



SPECIFICATION

MODEL	MIPD-I3I
VIDEO	
Sensor	1/2.8" SONY STARVIS 3MP Image Sensor
Effective Pixels	2065(H) x 1536(V), 3.21 Megapixel
Scanning System	Progressive Scan
Min. Illumination	Color : 0.1Lux, B/W : 0.01Lux, 0Lux(IR LED ON)
S/N Ratio	More than 50dB (AGC OFF)
LENS	
Focal Length (Option)	MIPD-I3IF : 2.8mm Fixed MIPD-I3IV : 3.0~12.0mm(4x) Motorized
Lens Type	MIPD-I3IF : Manual / Auto(Nighttime IR filter operation) MIPD-I3IV : DC Auto iris / Auto(Nighttime IR filter operation)
Focus Control	MIPD-I3IF : Manual, MIPD-I3IV : Auto / Manual
FUNCTION	
Day & Night	Auto / Day / Night
WDR	OFF / BLC / HLC / WDR
DNR	OFF / ON, 2D-NR & 3D-NR (Level Adjustment)
White Balance	ATW, Indoor, Outdoor, Manual
Electric Shutter	Auto, Manual (1/25~1/10000sec)
Motion Detector	OFF / ON
Privacy Mask	OFF / ON
DIS	OFF / ON
IR LED / IR Distance	4pcs Highlight power sensitivity IR LED / Approx. 30M
Others Function	Mirror, Flip, Defog, Sens-up, Contrast, etc.
NETWORK	
OS	Embedded Linux
Ethernet	RJ-45 (10/100 Base-T PoE)
Video Codec	H.264 High Profile & MJPEG
Video Streaming	Triple stream with H.264/MJPEG, Adjustable frame rate, CBR/VBR in H.264
Resolution	Max. 2048x1536(3MP)
Frame Rate	Triple stream, 1st stream: 30fps@2048x1536, 2nd stream: 30fps@640x480, 3rd stream: 30fps@640x480
Alarm IN/OUT	N/A
Event Action	Motion detection 12x12 block
Event Notification	FTP, Upload via E-Mail, TCP
Protocol	HTTP, HTTPS, FTP, SMTP, UPnP, DNS, DDNS, NTP, RTSP, RTP, TCP, UDP, ICMP, DHCP
Security	Password protection, user login / HTTPS encryption
ONVIF	ONVIF Profile S
Memory Slot	SDHC Memory card (purchased separately), Save event / alarm
Max. user access	Max. 8 users
SDK Support	API, ONVIF Profile S Compliant
Client Software	Web Browser, ONVIF Compatible 3rd Party VMS
GENERAL	
Operating Temp.	-10°C ~ +50°C
Operating Hum.	90% RH
Power	DC12V/1.5A, Max. 6W, PoE(Power over Ethernet): 802.3af
Material	Dome : Clear Bubble Dome / Housing : Reinforced plastic
Dimension (mm)	114.8mm(Dia. Ø) x 98.3mm (H)
Weight	Approx. 350g

* Specification and design are subject to change without notice.